

ACCESSIBILITY

The following is a description of Washington's Lottery minimum requirements for retailer accessibility. These requirements address the most common barriers to accessibility. Additional actions may be required depending on the actual conditions of your location. Compliance with these Minimum Guidelines and/or receiving a Lottery license does not ensure that a facility complies with all applicable laws.

Additional information about state and federal accessibility requirements will be sent to you before your Lottery license receives final approval. It is your responsibility to clarify any questions you may have. **You may call the Lottery's ADA (Americans with Disabilities Act) Coordinator, at (360) 810-2848 or by Telecommunications Device for the Deaf (TDD) at (360) 810-2849.**

Washington's Lottery inspects retail locations in response to complaints and confirm compliance with accessibility requirements. Inspections may result in suspension/revocation of a Lottery retailer license.

PARKING

General (See Table 1)

- When parking is provided for the public, you must provide accessible parking according to the requirements below. If only one accessible space exists, it must be a van accessible parking space.

Table 1: Minimum Number of Accessible Parking Spaces

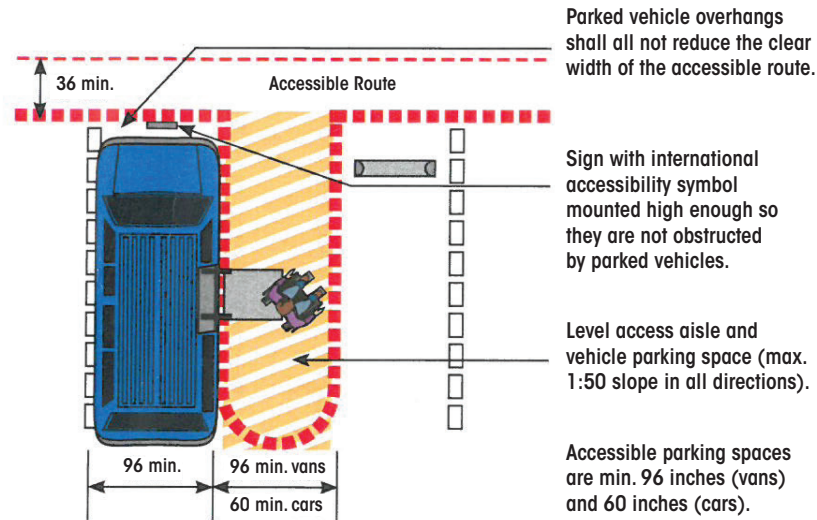
Total Number of Parking Spaces Provided (per lot)	Van-Accessible Parking Spaces with min. 96" wide access aisle	Accessible Parking Spaces with min. 60" wide access aisle
1 to 25	1	0
26 to 50	1	1
51 to 75	1	2
76 to 100	1	3
101 to 150	1	4

- The surface of the parking space must be firm, stable and slip-resistant. Examples of usable surfaces include cement, asphalt, or small, tightly packed gravel.
- Parking spaces intended for use by people with disabilities must be indicated by stripes on the ground.

Size of Parking Spaces (See Figure 1)

- Car-accessible spaces must have the following minimum dimensions:
 - » Width of parking space: 96 inches
 - » Width of access aisle : 60 inches
- Van-accessible spaces must have the following minimum dimensions:
 - » Width of parking space: 96 inches
 - » Width of access aisle: 96 inches

Fig. 1 - Size of Parking Spaces



- Parking access aisles must be clearly marked to alert drivers that this is not a parking space.

Parking Signage (See Figure 2)

- A sign that displays the Symbol of Accessibility is required at each car and/or van-accessible parking space.
- Signs must be installed so that they are not hidden or blocked by parked vehicles.
- Van-accessible spaces must also be marked with a sign that states "Van Accessible."



Fig. 2 - Parking Sign with "Van Accessible"

EXTERIOR PATH OF TRAVEL

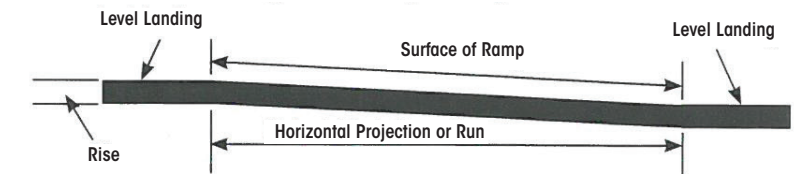
General

- A 36-inch wide accessible path must be provided to allow travel from public transportation stops, accessible parking and public streets or sidewalks to the accessible building entrance.
- A marked crosswalk should be used if the accessible route crosses a vehicular route.
- The surface of an accessible route must be firm, stable and slip-resistant.
- The accessible route must be free from steps and abrupt level changes over 1/2 inch.

Ramps and Curb Ramps (See Figure 3)

- A curb ramp is a short ramp cutting through a curb or built up to it. It usually takes you from a street or parking lot to a sidewalk.
- A ramp usually takes you from the sidewalk to an entrance.
- A ramp must be at least 36 inches wide and have a slope no greater than 1:12. That is, for every one inch of rise, there must be one foot (12 inches) of horizontal run.

Fig. 3 - Ramp Components



Slope	Maximum Rise	Maximum Horizontal Projection
1:12 to < 1:16	30 in.	30 ft.
1:16 to < 1:20	30 in.	40 in.

- A ramp must be free of "abrupt changes." Abrupt changes include:
 - » Cement breakage at the base of the curb
 - » Separation of cement or asphalt
 - » A raised edge greater than 1/2 inch high
- Ramps must have level landings at the bottom and top of each segment.
- Ramps need edge protection to prevent a person and/or mobility aid from accidentally going over the edge of the ramp or losing their balance.

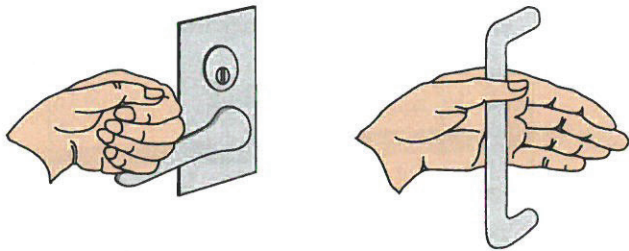
- If a ramp has a rise greater than 6 inches or is longer than 72 inches, it must have handrails on both sides.
- Handrails should be mounted so the top of the handrail is between 34 and 38 inches above the ramp surface.
- Handrail gripping surfaces must have a diameter of 1 ¼ inch - 1 ½ inch.

ENTRANCES (see Figure 4)

All entrances must have a minimum clear opening width of 32 inches.

- The maneuvering space in front of doors must be clear and level.
- Thresholds at doorways must not exceed ½ inch. A threshold is a strip directly under a door.
- Door hardware must be accessible.
 - » If a person has to twist the door handle to open the door, tightly grasp a device to make it work, or if the door cannot be opened using the "closed fist" method, it is not accessible.

Fig. 4 - Accessible Door Hardware



- » The door hardware must be 48 inches or less above the ground.
- » The force necessary to open a door must not be excessive.

- If a door has a closer, it must take at least 3 seconds to move from an open position of 70 degrees to a point 3 inches from the latch.

INTERIOR PATH OF TRAVEL

Clear Aisle/Turning Width

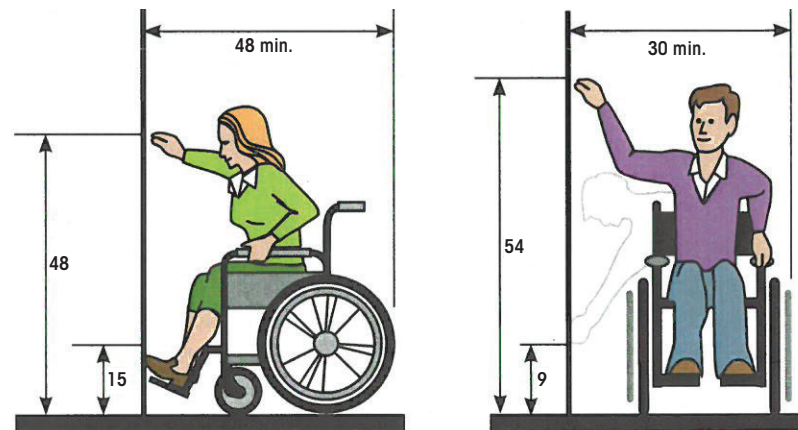
- The minimum clear width of an accessible route must be 36 inches.
- Displays, goods or other items must not restrict the clear path of travel to less than 36 inches wide.

- There should not be any changes in level higher than ½ inch on the path of travel to the sales location.
- If a person using a wheelchair must make a turn around a corner or obstacle, the minimum clear width of the accessible route must be 36 inches at turns and 42 to 48 inches around an obstacle.
- If a carpet or carpet tile is used on a ground or floor surface, it must be securely attached and have a maximum pile thickness of 1/2 inch.

Lottery Equipment (See Figure 5)

- Lottery equipment that is intended for player use, such as TSP - Ticket Scan Plus and Lottery Vending Machines, must have clear floor space in front of the machine of at least 30 inches wide and 48 inches deep.
- Buttons, bill acceptors, or other devices needed to operate the equipment should be no higher than 48 inches if the device must be approached from the front or 54 inches above the floor if the device can be approached from the side.

Fig. 5 - Maximum Reach - Height



Sales Counter

- There must be a 30 inches by 48 inches area of clear floor space in front of the sales counter.
- The sales counter where Lottery products are sold must be no more than 36 inches high.
- Accommodations, such as providing a clipboard, can be made when necessary.

RETAILER ACCESSIBILITY PROGRAM MINIMUM GUIDELINES



The Lottery's Retailer Accessibility Program is intended to assure that Lottery products are readily available to all eligible players. These guidelines will help you determine whether your retail location is accessible as required by Lottery policy.